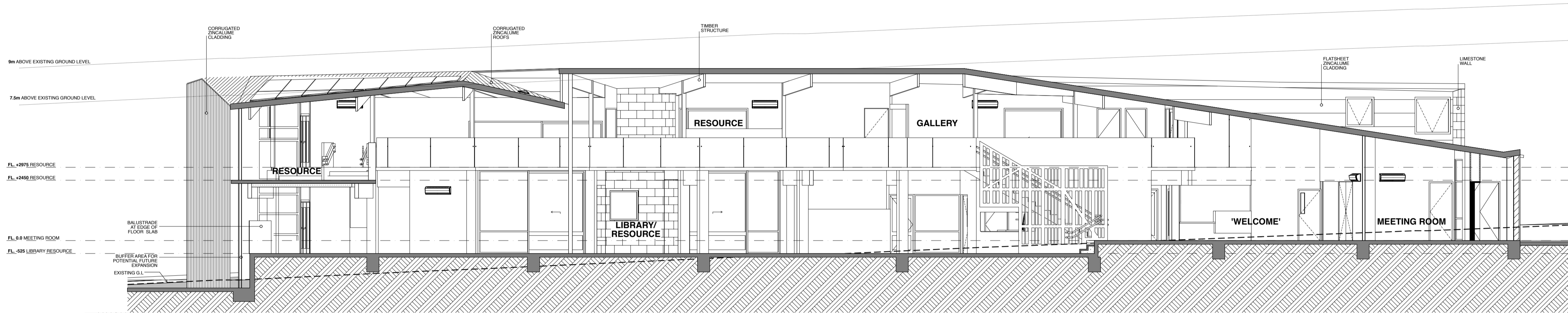
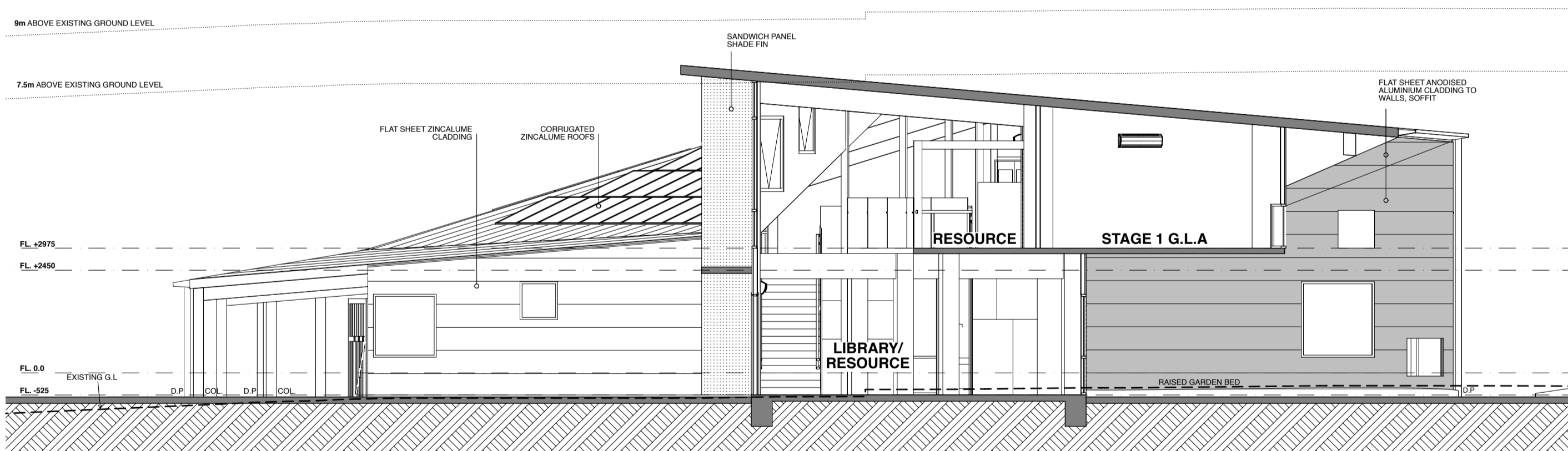


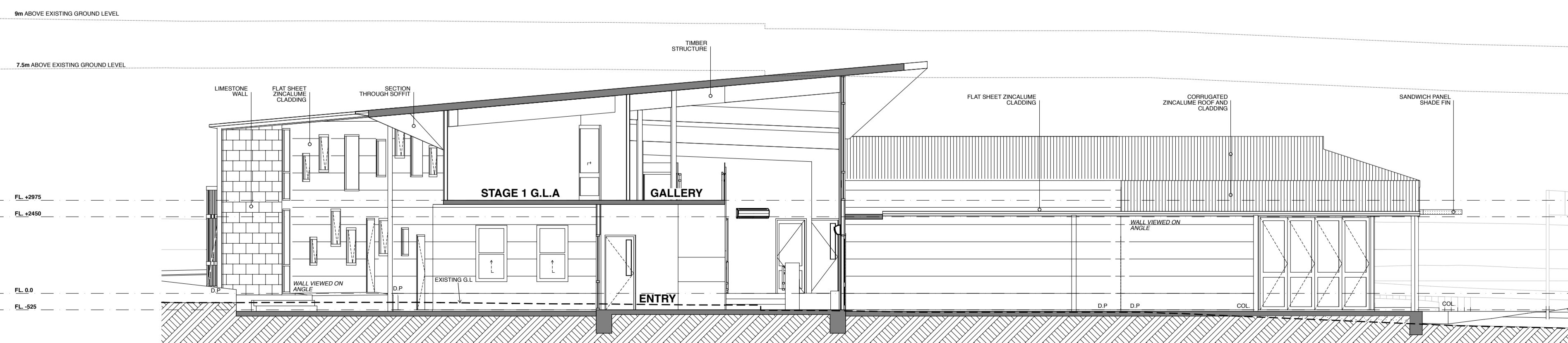
SECTION A-A



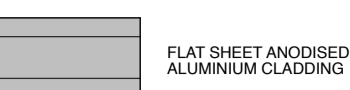
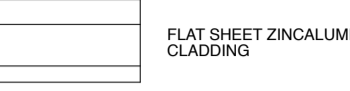
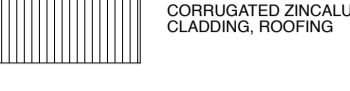
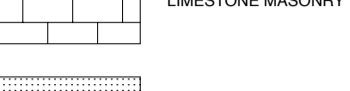
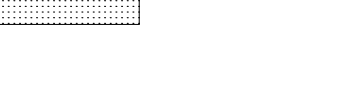
SECTION B-B



SECTION C-C



SECTION D-D

- KEY**
-  FLAT SHEET ANODISED ALUMINIUM CLADDING
  -  FLAT SHEET ZINCALUME CLADDING
  -  CORRUGATED ZINCALUME CLADDING, ROOFING
  -  LIMESTONE MASONRY
  -  SANDWICH PANEL



**NOWarchitecture** Pty Ltd  
 46 ST DAVID STREET, FITZROY  
 VICTORIA, AUSTRALIA, 3065  
 telephone : 03 8412 8200  
 facsimile : 03 8412 8299  
 mail@nowarchitecture.com  
 www.nowarchitecture.com  
 ABN: 18 006 308 925 ACN: 006 308 925

01 PRELIMINARY FOR 01/17/16 PCD 01/12/2016

REV. DESCRIPTION. DATE

PROJECT:  
**LISIEUX CATHOLIC  
 PRIMARY SCHOOL -  
 TORQUAY**

PROJECT:  
 90 SOUTH BEACH ROAD  
 TORQUAY NORTH

DRAWING TITLE:  
**SECTIONS 1**

DRAWING No.:  
**16711 A07** REVISION:  
**01**

SCALE:  
 1:100 @ A1

STATUS:  
**PRELIMINARY**  
 NOT TO BE USED FOR CONSTRUCTION

DATE: 18/11/2016 DRAWN BY: CHECKED BY: