

FROM THE PRINCIPAL

Dear members of the Lisieux community,

Welcome to Term 4! It was great to welcome staff and students back on Monday and to hear about their various holiday adventures. We're off to a flying start this term with a couple of special events in the next week or two:

This Friday we will celebrate the **Feast of St Therese**. This event fell during the school holidays (October 1) so tomorrow we will share a liturgy as a school community, then depart for a whole school excursion to The Geelong Botanical Gardens. Please ensure that your child has necessary snacks, lunch and drinks for the day and is in correct PE uniform.

On Monday 14 October our first **Lisieux Cross Country** will take place at Armstrong Creek District Park followed by a sausage sizzle lunch. Feel free to drop in and join us if you can. Once again, correct PE uniform is required for all students.

Our first **Grandparents Day** will take place next Friday 18 October. This will commence with a short liturgy at 11am, followed by morning tea for grandparents / special visitors and guided tours of the school, provided by students. We encourage students to invite their grandparents or special person to share in this day with them.

Our **Year 3 / 4 Sleepover** will be held on the night of Friday 18 October at school. Details of this event have been sent to Year 3 / 4 families. The sleepover has been planned to encourage the developing independence and autonomy of students, and to foster their personal and social capabilities.

Term 4 is shaping up to be full of exciting opportunities for academic, physical, spiritual, social and emotional growth and development. Thanks to families for your ongoing support and involvement in the life of our community. It is always appreciated.

As communicated via email correspondence to all families this week, we ask for your ongoing prayers for two members of our school community. Estella Judd in Year 1 was due to undergo surgery on Tuesday this week but this has been delayed due to a cold. The surgery will be rescheduled and your ongoing support of the Judd family is greatly appreciated. We also ask for prayers for Year 1 educator, Brienca Dries. Brie has sustained a serious back injury in a road incident over the holiday break in Tasmania. She is undergoing therapy and may not be able to return to school for some time. Mrs Rearne Clark will continue working with Year 1 students until further notice. As always, we will endeavour to communicate with all families as updates come to hand.

God's blessings for the week ahead,

Susan Ryan
Principal

Susan.ryan@lisieux.catholic.edu.au



ISSUE 29 | 10th October 2019

SCHOOL CALENDAR

OCTOBER

| | |
|-----------------------------|---|
| Fri 11th | St Therese of Lisieux Liturgy 9:15am Feast Day Celebrations CareMonkey sent 19/9 |
| Mon 14th | Cross Country CareMonkey sent 8/10 Confirmation Family Night at Lisieux 7pm-8pm |
| Thur 17th | Kids teaching kids conference – Year 6 student CareMonkey sent 9/10 |
| Fri 18th | Grandparents Day Year 3/4 Sleep Over CareMonkey sent 10/10 |
| Sat 19th | Year 3/4 Parent Breakfast CareMonkey sent 10/10 |
| Sun 20th | Confirmation Presentation Mass 8:45am St Therese Church |
| Mon 21st | October Birthday Morning Tea |
| Tues 22nd | Student Learning Conference 3:00pm – 8:00pm |

PRAYER

Lord,

We come to you in need of your healing hand. In you all things are possible. Hold our heart within yours, and renew the minds, bodies, and souls of those in our community who need your strength.

You gave us life, and you also give us the gift of infinite joy. Give us the strength to move forward on the path you've laid out. Guide us towards full health, and give us the wisdom to identify those you've placed around us to help us get better. Amen.

SCHOOL INFORMATION

REQUEST FOR HELP

You may have noticed pieces of an oversized shoe outside Year 1's classroom door. It was a donation last term, from St Joseph's College Drama department, following their Shrek production. Our plan is to use it as a play space / quiet reading nook. To do this we need to re-assemble it before inviting students to help beautify its exterior. We will need some assistance from a parent or two with building skills and tools to do this. If you are able to help with this fun project please contact Fiona at Reception. As always, we greatly appreciate our community support.

CROSS COUNTRY

Next Monday 14th of October we will be holding our Whole School Cross Country Event at Armstrong Creek District Park, located on the corner of Sovereign Dr and Unity Dr from 10am - 2pm.

All students are asked to come wearing the colours of their house group.

We would also love family support on the day to cheer on the runners, the below timetable will give you a guide to what time your child(ren) are running.

Races begin:

Times are approximate

10:30am Year 1 boys 1km
10:40am Year 1 girls 1km
10:50am Prep Boys 400m
11:00am Prep Girls 400m
11:10am Year 2 boys 1km
11:20am Year 2 girls 1km
11:30am Year 3/4 boys 2km
11:50am Year 3/4 girls 2km
12:10pm Year 5/6 boys 3km
12:40pm Year 5/6 girls 3km

ITEMS/ HELP REQUIRED

This term all students will tackle an exciting outdoors project during their 100 languages classes. This will be a mural/painted paling fence in the Ubuntu garden, with each student contributing painted images to this fence. We are looking for a few parents who have a belt sander and /or a few spare hours to assist preparing the boards.

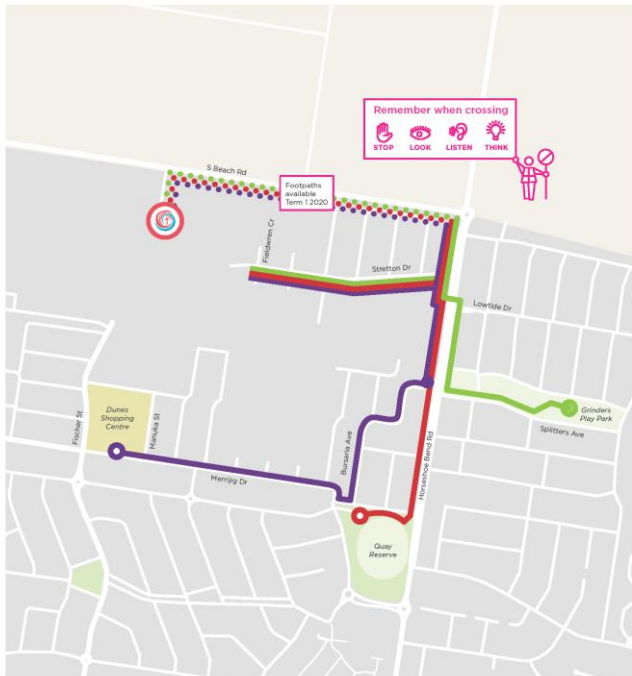
We are looking for any acrylic paint to use, especially bright colours. If you know a builder, painter or paint shop owner we would love it if you could ask them to assist us, or you might get around to Spring cleaning your own shed. Paint can be dropped to Fiona at reception. Many thanks

WALK TO SCHOOL

Last term our school community contributed to the development of our schools Active Map as a part of Walk to School 2019. This term we are excited to launch our new Active Map which highlights safe active routes for students and their families to walk, ride, scoot or skate to and from school. The map highlights new 'Student drop-off/pick-up areas' which enable children that are currently being driven, to be active for a portion of their journey. Keep an eye out for new signs and footpath decals that are being installed to further promote these active travel routes.



ACTIVE MAPS
Lisieux Catholic Primary School



Paths to school

- Merrijig Path**
Drop-off at Dunes Shopping Centre, near the corner of Merrijig Drive and Manuka Street.
- Quay Path**
Drop off at Quay Reserve, Merrijig Drive.

- Grinders Path**
Drop-off at Grinders Play Park, near the corner of Cosy Avenue and Grinders Avenue.

Map key

- Drop-off Point
- Joining Point
- Park
- Greens
- Building

What it is:

Walk to School encourages students to walk, scoot or ride to school to help them get their 60 minutes of activity. It also reduces petrol pollution and traffic. Students are encouraged to team up and travel together.

How does it work:

You walk, ride or scoot to school. Each class will have a poster in your class to record your active travel. You can still tick the poster even if you only walk, ride or scoot in one direction. The class with the most people walking to school will receive a prize!!!!!!

How to get to school:

If you're wondering the safest way to get to school we recommend that you go up Horseshoebend Road, turn left at Stretton Drive and then there will be a dirt path that will take you to the back of the school. There is also a supervised crossing on Horseshoebend Rd to help you cross.

Abbey Lee & Chelsea Spagnuolo Yr 5





To the Owner/ Occupier

**South Beach Road Upgrade Stage 2
Notice for New Traffic Conditions – One Way Road Closure/ Detour**

Negri Contractors, on behalf of Surf Coast Shire Council, are upgrading South Beach Road between the Surf Coast Highway and Horseshoe Bend Road. These works include upgraded storm water drainage, new vehicle crossings, new footpath on south side of road only and new pavement construction.

During our Footpath and Road Construction, the speed will be dropped to 40km/h, and a One-Direction Detour will be required. The changed traffic conditions are scheduled to affect South Beach Road properties from the 14th of October for 10 weeks (until Late-November), you will additionally be notified on the day prior to the traffic implementation, if access will be limited

During this stage of traffic implementation, traffic will flow in a 'Clockwise' Direction, key notes of the change are noted below (and a graphic of the detour is on the following page):

- If you are receiving this letter you will need to make sure you and all other driving residents **Only Turn Left** while exiting your property, **otherwise you may be heading down the wrong way onto oncoming traffic**, or become delayed in your route to Horseshoe Bend Road.
- Only West-Bound traffic will be permitted along South Beach Road (between Sagittarius Street and Scorpio Street)
- There will be **No Right Turn** permitted when leaving Lisieux Catholic Primary School, Traffic will be detoured to a **right onto Scorpio Street**, another **right onto Aquarius Avenue**, one more **right onto Sagittarius Street** and they will arrive back onto South Beach Road to turn left back to 2-direction traffic (and Horseshoe Bend Road).
- South Beach Road will not be able to be accessed from Scorpio Street, however the remainder of the street will remain 2-directions.

We appreciate your cooperation and thank-you for your patience during construction. We will do our best to minimise any inconvenience.

As the works progress to further stages, we will be in further contact to inform you of relevant traffic arrangements that may affect you.

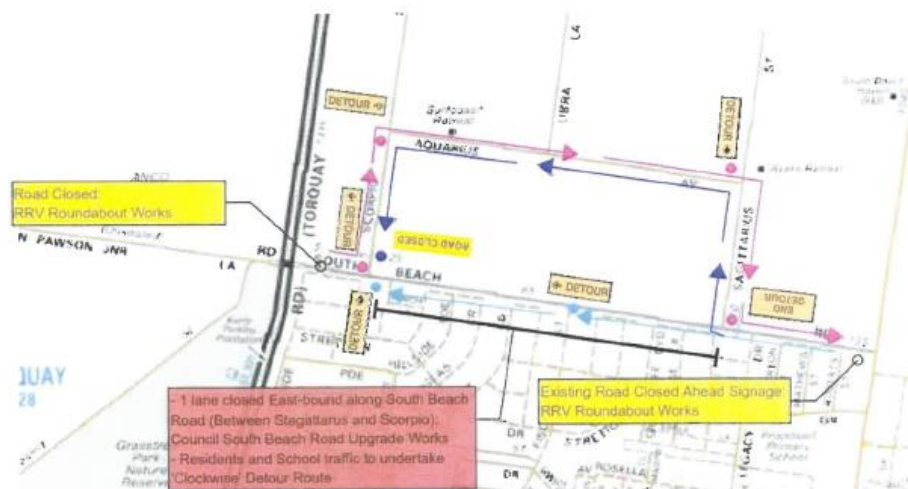
CONTACTS & MORE INFORMATION

To find out more about construction dates and access issues, contact Beau Tennent at Negri Contractors on 0408 377 612 or beau@negrivic.com.

Yours sincerely,

Beau Tennent
Beau Tennent

QSE and Project Manager – Negri Contractors



- Light Blue Line – Indicates only West-Bound Traffic on South Beach Road
- Dark Blue Line – Indicates normal West-Bound Traffic along Sagittarius Street, Aquarius Avenue, and Scorpio Street
- Purple Line – Indicates East-Bound Traffic detour route and normal East-Bound Traffic along Scorpio Street, Aquarius Avenue, and Sagittarius Street.

PHOTO'S FROM THE WEEK

Parents & Friends Sponsors



THINKING OF SELLING?
OR WOULD LIKE TO KNOW
WHAT YOUR HOMES WORTH?

Call us today!



7 GILBERT ST TORQUAY VIC 3228 | 5261 2104
22 WILLIS ST WINCHELSEA VIC 3241 | 0458 513 860
mccartneyrealestate.com.au



play · learn · create



Shop 1a, 9 Gilbert Street

www.torquaytoys.com.au

Torquay Vic 3228

Follow us @torquaytoys

P: 03 5261 5594



**LUKE
DAVIS
ELECTRICAL
SERVICES**

AT LUKE DAVIS
ELECTRICAL SERVICES
WE SPECIALISE IN
RESIDENTIAL ELECTRICAL
SERVICES,
BIG OR SMALL

*Proud sponsor of
Lisieux Catholic Primary
School Torquay*



📞 0409 943 163

ldelectricalservices.com.au

REC 24133



Linking people with property

Experience our female approach, we are creating outstanding results time and time again for our clients throughout Torquay, Jan Juc and the Surf Coast.

- Extensive local knowledge - we live where you live
- We successfully manage over 160 rental properties

Call Lynne: 0415 966 471 or Suzy: 0438 438 388



COASTAL SALES | PROPERTY MANAGEMENT | LAND PROJECTS

LINKSPROPERTY.COM.AU



Southern Casalinga

- CERTIFIED ORGANIC SOURDOUGH -

- ✓ Certified Organic
- ✓ Slowly Fermented
- ✓ Vegan
- ✓ Hand made in Torquay
- ✗ Baker's yeast
- ✗ Preservatives
- ✗ Chemical Traces
- ✗ GMO's

A full flavoured family loaf enhanced by slow fermentation and the addition of stone-ground wholegrain flour. Baked on the stone hearth, this loaf has a delectable moist crumb and a tasty caramelised crust.

**ZEALLY BAY
SOURDOUGH**

zeallybaysourdough.com.au
@zbsourdough
@zeallybaysourdough
@zeallybaybread

Your taxation specialist!

- Accountants
- Taxation Services
- Business Advice
- Financial Planning
- Superannuation
- Audit Services



STS
ACCOUNTING
GROUP
Surfcoast Taxation Services Pty Ltd

Torquay: The Dunes Village
Corner Fischer Street & Merrilij Drive
Tel: (03) 5261 2262 Fax: (03) 5261 6639
Email: admin@surftax.com.au

Winchelsea: 22 Willis Street
Postal: P.O. Box 40, Winchelsea Vic 3241
Tel: (03) 5267 2673 Fax: (03) 5267 2465
Email: winch@surftax.com.au

Certified Practising Accountants



SOUTHPOINT

GARDEN SUPPLIES

The Mango The



DEANS MARSH

MONDAY 21 OCTOBER 10AM-12.30PM
 Pennyroyal Valley Road, Deans Marsh, park next to Community Cottage
 Deans Marsh Early Years Reference Group and Council invite you to come along and enjoy a fun morning of active games, creative craft, healthy snacks and much more.

MORAC

TUESDAY 22 OCTOBER 11AM-12PM
 Newling Reserve, Clerke Court, Moriac
 Moriac Early Years Reference Group and Council invite you to come along and enjoy a morning of upcycled crafts, song and story time, active sports and much more.



This Children's Week event is presented by Surf Coast Shire Council in partnership with the Department of Education and Training.

TORQUAY

WEDNESDAY 23 OCTOBER 10AM-12PM
 Elephant Walk Park, The Esplanade, Torquay
 Torquay & Jan Juc Early Years Reference Group and Council invite you to come along and experience a Welcome to Country, smoking ceremony and digeridoo performance at 10am, followed by activities including face painting, story time, creative craft, sensory experiences and much more.

ANGLESEA

THURSDAY 24 OCTOBER 9.30AM-11.30AM
 Anglesea YMCA Recreation Camp, Inverlochy Street, Anglesea
 YMCA Kids Go Bush Team and Council invite you to come and experience nature play, bush craft, mandala stones and much more.

Close toed shoes required

WINCHELSEA

THURSDAY 24 OCTOBER 1-3PM
 30 Hesse Street, Winchelsea, park next to Kindergarten
 Winchelsea Early Years Reference Group and Council invite you to come along and enjoy a fun afternoon of activities including nature play, face painting and bush craft.

LORNE

Lorne Kindergarten and Occasional Care are collaborating on a joint in-service event.

GENERAL INFORMATION

- Please bring your own water bottle, hat and sunscreen.
- Events may be cancelled during extreme weather.

FOR FURTHER INFORMATION ABOUT CHILDREN'S WEEK VISIT:
www.surfcoast.vic.gov.au/events
 P. 5264 9250
 E kmcca@surfcoast.vic.gov.au

Sustainability school fundraising



Litter free living



There is a wealth of information and options available online in relation to nutritious nude food ideas and reusable packaging.

The Lisieux P&F Committee has also setup permanent fundraising codes with the following product suppliers:

- <https://bellarinebeewraps.com/> (20% commission)
- <http://www.litterfreeliving.com.au> (20% commission, 10% discount & free zip snack bag for purchases >\$50)
- <https://www.stuckonyou.com.au/affiliate/fundraiser/LISIEUX> (20% commission full price / 5% sale items)

(ENTER LISIEUX AT CHECKOUT TO HELP RAISE FUNDS FOR OUR SCHOOL!)

THE MANGO FUNDRAISER

Mango fundraiser order forms were sent home with students at the end of last term. Spare copies are available at the office in case you would like to display them at your work. Collect orders from family members, friends, neighbours and colleagues. Some people might be willing to have half a tray (6 to 12 mangoes, depending upon the size of the fruit). Consider ordering an additional box for your children to sell to neighbours for a set price per mango, or to take along to sell to friends at sports, playgroup, Mum's groups and other gatherings. Please return your order form to the office by Friday 25th October, 2019. Expected delivery will be in the week beginning 25th of November, 2019.

How many trays of mangoes could your family consume? Fresh mango, mango ice-cream, mango smoothies, mango icy-poles, mango trifle, mango cheesecake, mango sorbet, mango mousse, mango Weiss bars, mango pavlova, mango fruit salad, mango cake, mango pudding, mango rice pudding, mango purée, mango salsa, mango chutney, mango and coconut, mango and avocado, mango and prawns, mango curry, mango seafood salad, mango and chicken salad... the possibilities are great!

Parents and Friends Committee



**Fresh North Queensland Mangoes
Direct from the farm to you!**

Support Our Mango Fundraiser

If you *love mangoes*, here's your chance to indulge in fresh juicy Kensington Pride mangoes and support our fundraising drive.

We are selling trays of mangoes picked and packed during the premium harvest.

Cost per tray is: \$27.

Return your order form to the school office by: Friday 25th October, 2019.

Payment options: Cash or EFT to Lisieux Catholic Primary, BSB 083-347, account number 33975-7598. Please put your family name as reference.

Expected delivery: Week beginning 25th November, 2019.

The boxes of mangoes are packed in a single layer, with approximately 7 kg of mangoes per tray. The number of mangoes depends on the size of the fruit and may range from 12 to 23 mangoes.

You are welcome to order for family members, friends and colleagues. You can deliver to others or they may collect their own mangoes from the school on the nominated afternoon.

Money raised will go towards: Playground resources.

For further information contact: Renee, M. 0490701855.