



Lisieux Catholic Primary School

Student Behaviour Policy

Lisieux Catholic Primary School is a school which operates with the consent of the Catholic Archbishop of Melbourne and is owned, operated and governed by Melbourne Archdiocese Catholic Schools Ltd (MACS).

School Profile

About

Lisieux Catholic Primary School is one of four Catholic primary schools within the Nazareth Parish. In 2018, Lisieux commenced operation as a Prep-Year 3 co-educational learning community from the site of a former home in South Beach Road, Torquay, while Stage 1 building works continued. With a small initial cohort of students and a dedicated staff team, a strong community foundation was laid. That foundation has been built upon over the past three years and our community has continued to thrive.

At Lisieux, we believe the wellbeing of students is fundamental to both their academic and personal success. We understand that students will flourish in a learning environment where they are known, valued and affirmed and this understanding has inspired our school motto, 'known and loved'. The school is committed to the development of the whole person: spiritual, psychological, academic, social-emotional and physical. At Lisieux we strive to ensure that students are known and loved, nurtured and cared for. Individuals are encouraged to develop their potential, live their faith and contribute to shaping a socially just society with courage, confidence and integrity. Our goal, working in partnership with parents, is to support our students' educational journey, inspiring them to flourish, to celebrate their many talents and to become advocates of peace and justice.

Lisieux is committed to providing equitable access and opportunity for all. The School considers that awareness of, recognition of, and responsiveness to the needs and rights of all individuals are essential to human dignity. Inclusive practices embrace and celebrate diversity, invite belonging and provide opportunities for participation and achievement of appropriate learning outcomes.

Foundational to our work with students, families and the school community is the building of genuine, authentic relationships. The development and promotion of high-quality relationships are responsibilities shared by all members of the school community. All teachers, students, families, parishes and the wider community contribute to fostering life-affirming relationships that recognise and support the inherent dignity of each person.

Rationale

At Lisieux we strive to provide an inclusive education which values equity and diversity and celebrates difference. Equity and diversity are enacted through a pedagogy of inclusion and a commitment to uphold the rights of all to be welcomed, valued, acknowledged and actively engaged in education. Our learning community is committed to processes that support all students to make optimal progress and respect the rights of all students to learn in a positive and supportive environment. We seek to provide successful participation and to intervene as early as possible when students are not actively engaged in learning. Student behaviour is linked to the quality of the learning experiences. Purposeful, authentic, and relevant learning experiences that are of a sufficiently challenging yet achievable standard maximise positive behaviour.

Vision

In a vibrant school community, and with Christ as our guiding light, Lisieux Catholic Primary School strives to:

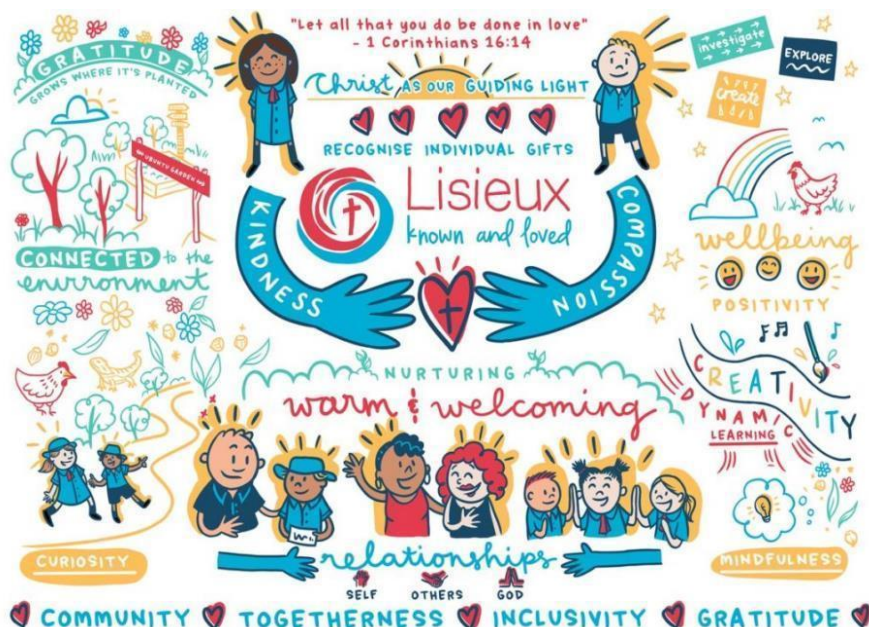
- Nurture the development of the whole person as unique individuals made in God's image;
- Foster a love of life, learning and God's creation;
- Pursue fullness of life for all.

Mission

Lisieux Catholic Primary School strives to achieve our vision in the following ways:

- Enabling gospel values to permeate all facets of school life, encouraging each child's relationship with god;
- Providing diverse and engaging learning experiences to meet the needs and learning styles of each student;
- Building a culture based on the premise that every child can learn;
- Encouraging each student to recognise and nourish their gifts and talents and those of others.

Values



Aims

Our school is a community that exemplifies the gospel values of love, forgiveness, justice and truth. Our school community recognises that everyone has the right to be respected, to feel safe and be safe and, in turn, our school community acknowledges each member's own obligation to behave responsibly. This Policy is intended to guide our school's actions. It has been developed in consultation with the school community and seeks to prioritise respectful relationships and safety in response to the rights and needs of all members of the school community. A safe and supportive environment respects the rights of all students to learn, the rights of all teachers to teach and the rights of all members of the school community to be safe.

Every person at the school has a right to feel safe, to be happy and to learn. Therefore our school aims:

- to promote the values of honesty, fairness and respect for others
- to acknowledge the worth of all members of the community and their right to work and learn in a positive environment
- to maintain good order and harmony
- to affirm cooperation as well as responsible independence in learning

- to foster self-discipline and to develop responsibility for one's own behaviour.

Guiding Principles

Lisieux strives to build a safe and positive school environment that is guided by Gospel values and honours the dignity of the individual, the family and the school.

The development and promotion of high-quality relationships are responsibilities shared by all members of the school community. Teachers, students, families, parish members and the wider community contribute to and share in the responsibility to foster life-affirming relationships that recognise and support the inherent dignity and safety of each person. All members of the school community are expected to contribute to the mission and vision of the school and to understand their rights and acknowledge their obligation to behave responsibly.

As a provider of Catholic education, the Principal will take into account the need for the school community to represent and conform with the doctrines, beliefs and principles of the Catholic faith when making decisions regarding matters of school administration, including enrolment. Pupils and families who are members of other faiths are warmly welcomed at our school. However, the school reserves its right to exercise its administrative discretion in appropriate circumstances, where it is necessary to do so to avoid injury to the religious sensitivities of the MACS school community.

It is vitally important that the school is made fully aware of each child's individual circumstances insofar as these may impact upon his or her physical, functional, emotional or educational needs, particularly where the school is required to provide additional support to the child.

Purpose

This policy sets out the requirements to support students' behavioural, educational and emotional engagement to enable flourishing learners. This Policy should be read in conjunction with all school policies and the [CECV Positive Behaviour Guidelines 2018](#).

Scope

This policy applies to all students, families, and staff of Lisieux Catholic Primary School .



Principles

Lisieux Catholic Primary School strives to build a safe and positive school environment that is guided by Gospel values and honours the dignity of the individual, the family, and the school.

At Lisieux Catholic Primary School we strive to provide an inclusive education which values equity and diversity and celebrates difference. Equity and diversity are enacted through a pedagogy of inclusion and a commitment to uphold the rights of all to be welcomed, valued, acknowledged, and actively engaged in education. Our learning community is committed to processes that support all students to make optimal progress and respect the rights of all students to learn in a positive and

supportive environment. We seek to take a proactive and preventative approach to the successful participation of students using a multi-tiered system of support. This approach, aligned with the [CECV Intervention Framework Guidelines](#), looks to intervene as early as possible when students are not actively engaged in learning from a strengths-based perspective. Student behaviour is linked to the quality of the learning experiences. Purposeful, authentic, and relevant learning experiences that are of a sufficiently challenging yet achievable standard maximise positive behaviour.

As the faith community leader in the school, the principal endeavours to foster a safe and supportive environment that respects the rights of all students to learn, the rights of all teachers to teach and the rights of all members of the school community to be safe. It is important that the school is made fully aware of each child's individual circumstances and the interaction with their physical, functional, emotional, or educational needs, particularly where the school is required to provide additional support to the child.

The development and promotion of high-quality relationships are responsibilities shared by all members of the school community. Teachers, students, families, parish members and the wider community contribute to and share in the responsibility to foster life-affirming relationships that recognise and support the inherent dignity and safety of each person.

This policy is intended to guide our school's actions. It has been developed in consultation with the school community and seeks to prioritise respectful relationships and safety in response to the rights and needs of all members of the school community.

Policy

Lisieux Catholic Primary School recognises the importance of providing clear guidance and expectations which are applicable to all members of the school community. Appendix 1 sets out the school's expectations for its students, parents/guardians/carers, and staff.

Attendance expectation

Lisieux Catholic Primary School has a legal requirement to ensure student attendance each day. This is also a shared expectation of students, parents/guardians/carers and the wider school community, focusing on positive and pro-social behaviours together with prevention and early intervention.

Lisieux Catholic Primary School recognises the importance of providing clear guidance on regular student attendance to all members of the school community. Student engagement, regular attendance and positive behaviours will be supported through respectful relationship-based whole-school practices, as well as targeted and individualised support when required. The focus on relational and engaging learning environments fosters meaningful and personalised approaches, increasing student connection, engagement, and wellbeing. Please refer to the Attendance Policy for attendance expectations.

Support for serious and unacceptable student behaviour

Effective student behaviour support is enhanced through internally-based school support structures, and externally-based family, education, community and interagency partnerships. The school will apply a range of supports and measures to address serious and unacceptable student behaviour, in line with CECV Intervention Framework.

Where a student acts in breach of the behaviour standards of our school community, the school will institute a staged response, in accordance with the [CECV Positive Behaviour Guidelines](#) 2018.

Where applicable, an incident report will be completed and provided to the principal or relevant staff member, noting the templates provided in the CECV Positive Behaviour Guidelines. Appendix 2 sets out the school's strategies and support to reinforce accepted behaviour.

As every child's educational needs can change over time, it will often be necessary for the school to review any additional assistance that is being provided to the child, in consultation with parents/guardians/carers and the child's treating medical/allied health professionals, to assess:

- whether the additional assistance remains necessary and/or appropriate to the child's needs

- whether the additional assistance is having the anticipated positive effect on the child's ability to regulate, individual physical, functional, emotional or educational goals
- whether additional specialised assistance or further specialised advice is required
- whether it remains within the school's ability to continue to provide the additional assistance, given any limitations that may exist.

Lisieux Catholic Primary School will implement positive behaviour support strategies and undertake actions to prevent the need for the use of restraint or seclusion in accord with the CECV Positive Behaviour Guidelines 2018. If a student is placed in a separate room as a means of regulation support, staff will maintain active supervision of the student.

Parameters around Restraint or Seclusion Use

The use of restraint or seclusion does not form part of any of Lisieux Catholic Primary School 's Behaviour Support Plans or Student Safety Plan. However, there are limited circumstances in which restraint or seclusion may be deemed appropriate.

In deciding to implement any form of restraint or seclusion, Lisieux Catholic Primary School 's staff are aware that their actions may directly increase the risk of injury and trauma, both for the student and for the staff member themselves. Such decisions are usually made in times of high stress. Actions that may be considered reasonable will be made by the staff present and will depend on the individual circumstances of each case as a matter of professional judgment.

Restraint and seclusion will only be used in limited emergency situations, as outlined below:

1. The student's behaviour poses an imminent threat of physical harm or danger.
2. The action is reasonable in all the circumstances.
3. There is no less restrictive means of responding in the circumstances.

If restraint or seclusion is used, the least restrictive form of restraint/seclusion will be used for the minimum time possible. The restraint/seclusion will cease as soon as the immediate danger for the student or others is averted.

The clear priority when managing such an incident will be the safety of all concerned. Lisieux Catholic Primary School 's staff involved in an incident of restraint or seclusion will immediately notify the principal and provide for the immediate care and safety of those concerned. The student's parents/guardians/carers will be contacted. A post-incident evaluation and report will be completed in accord with the templates and processes outlined in the CECV Positive Behaviour Guidelines 2018.

To assist the school to discharge its safety responsibilities, Lisieux Catholic Primary School will adhere to an occupational health and safety program through which potential safety hazards are identified and analysed in terms of the likelihood of an event occurring, and the potential consequences if the event was to occur.

The use of corporal punishment is expressly prohibited at Lisieux Catholic Primary School and under the *Education and Training Reform Act 2006* (Vic).

Breach of Student Code of Conduct

Students whose behaviour breaches the school policies, or the Student Code of Conduct may be sanctioned by the class teacher or school principal as deemed appropriate given the nature of the breach and the age of the student.

In cases of serious and/or persistent breaches of school policy or student code of conduct, the [CECV Positive Behaviour](#) Guidelines 2018 outlines the process for managing and addressing student misbehaviour. The Lisieux Catholic Primary School 's policies and procedures for the suspension, negotiated transfer of students, and expulsion of students outline the management of suspension and expulsion, and appeals processes.

A decision to suspend, transfer, or expel a student is determined only:

- on prescribed grounds
- in accordance with prescribed procedures outlined in the policy and guidelines
- if procedural fairness requirements are satisfied
- if the requirements of the school's Suspension Policy, Negotiated Transfer Policy or Expulsion Policy are met, where applicable.

In accordance with applicable legislation and the school's Child Safety and Wellbeing Policy, the police, Families and Children's Services within the Department of Families, Fairness and Housing (DFFH), Commission for Children and Young People (CCYP), and/or other relevant bodies will be informed of any unlawful breaches.

Complaints

Lisieux Catholic Primary School is required to maintain a fair, effective, and efficient complaints-handling process so that complaints about the school can be addressed. If a parent/guardian/carer of the student would like to make an appeal on student behaviour processes, parents/guardians/carers can raise the concerns with the principal or relevant person either in writing or by making an appointment.

Please ensure the relevant person/s is given a reasonable amount of time to take the steps required to resolve or address the concerns. Please refer to the school's complaints handling policy and/or guidelines for further information. If the matter cannot be resolved at the school level, or if the complaint is about the principal of the school, complainants are advised to contact the relevant MACS Regional Office. Alternatively, parents/guardians/carers may lodge a complaint online and read the MACS Complaint Handling policy at

<https://www.macs.vic.edu.au/Contact-Us/Complaints.aspx>.

Roles, responsibilities, and reporting

Role	Responsibility	Reporting requirement (if applicable)
Principal	Ensure publication of the school's Student Behaviour policy and procedures	Annual attestation to the Executive Director
Principal	Monitor compliance with this policy	Complete an OHS online report for any incident

Procedures

School-based processes and guidelines

Definitions

Appropriate behaviour

Behaviour that is suitable for a public gathering, respecting the other members of the forum (class, meeting, assembly, gathering) and treating others as you would wish to be treated. Members are encouraged to take responsibility for their actions and to show mutual respect, maturity, and common sense. In general, appropriate behaviour is any behaviour that contributes to the positive learning environment and aligns with our school rules, codes of conduct and behavioural expectations.

At risk behaviour

Any behaviour that has the potential to cause harm or injury to self or other. This includes physical, emotional, or psychological harm or behaviour that significantly disrupts the educational program.

Behaviour

The way in which one acts or conducts oneself, especially towards others. In general terms, it can be anything we say or do.

Bullying

May generally be characterised as offensive, intimidating, malicious or insulting behaviour, an abuse or misuse of power through means that undermine, humiliate, denigrate or injure the recipient. Bullying generally involves a series or pattern of events in which one individual has demonstrated unacceptable behaviour towards another individual. Please refer to Lisieux Catholic Primary School's Anti-Bullying Policy for further details.

Catholic Education Commission of Victoria Ltd (CECV)

The overarching, strategic-planning and policy-making body for the Catholic school system in Victoria, including MACS schools.

Challenging behaviour

Behaviour that significantly challenges the day-to-day functioning of the school. The behaviour impacts on learning and interrupts students' and staff's capacity to feel safe or function in a safe and orderly environment

Criminal offences

Unacceptable behaviour that may be serious enough to constitute a criminal offence. If Lisieux Catholic Primary School becomes aware that an offence has been or may have been committed, these concerns will be reported to the police or other authorities, as appropriate.

Discriminatory conduct

Conduct whereby an individual is treated less favourably based on a relevant attribute, including their sex, race, sexual orientation, age, disability, religion, physical appearance or belief or gender reassignment. Such action may constitute discriminatory conduct that is contrary to Commonwealth and Victorian anti-discrimination legislation.

Expulsion

Expulsion involves the termination of the contract entered into at the time of the enrolment by the parent/guardian/carer/relevant persons.

Inappropriate behaviour or unacceptable behaviour (including bullying, harassment, and victimisation)

May involve actions, words or physical gestures that could reasonably be perceived to be the cause of another person's distress or discomfort. Unacceptable behaviour does not have to be face-to-face, and may take many forms such as gestures, written, telephone or e-mail communications or through social media or technology platforms.

Negotiated Transfer

Negotiated transfer involves a documented and mutually agreed move of a student to another school and occurs when all other pastoral and discipline measures, including suspension, have failed to resolve an issue of serious inappropriate student behaviour. A negotiated transfer ends the enrolment agreement with the first school and requires an enrolment in another school.

Physical restraint

The use of force to prevent, restrict or subdue the movement of a student's body or part of their body where the student is not free to move away. Restraint does not include protective physical interventions, which involve physical contact to block, deflect or redirect a student's actions, or disengage from a student's grip.

Seclusion

The solitary confinement of a person in a room or area from which their exit is prevented by a barrier or another person. Seclusion includes situations where a person is left alone in a room or area and reasonably believes that they cannot leave that room or area even if they may physically be able to (e.g., the door is not locked). In extreme circumstances, e.g., in response to behaviours that cause harm to self or others, teachers will respond by exiting the other students from the

learning space to ensure their safety. Where the student continues to display threatening and dangerous behaviour (e.g., wielding a bat), staff will seek to limit harm to others by isolating the student for the minimum amount of time required for the student to calm. Seclusion does not include the use of a safe place, time out or chill-out rooms, being conditions that are set up to support the student and often included in Behaviour Support Plans.

Suspension

Suspension occurs when a student's attendance at school is temporarily withdrawn on the authority of the principal or their delegate, for a set period of time.

Withdrawing privileges

Withdrawing student privileges can act as a consequence of breaching classroom or school behavioural standards. Specific privileges withdrawn may vary between students based on the individual student's support plan, however they may include things such as representing the school at inter-school sports or attendance at a school event. This must be time-limited and the risk to the student's engagement should be taken into account. The student must be told why privileges are withdrawn, and how they should behave for privileges to be reinstated.

Withdrawal from class

If a student's behaviour significantly interferes with the rights of other students to learn or the capacity of a teacher to teach a class or where there is possibility of harm to others, that student may be temporarily removed from regular classroom activities. In more serious cases the student may be required to leave the classroom for a specified period. Schools have a duty of care to ensure that students are always supervised, including when they are removed from a class. Where appropriate, parents/guardians/carers will be informed of such withdrawals. Withdrawal from class does not constitute formal school exclusion such as suspension (including in-school suspension) or expulsion.

Related policies and documents

Supporting documents

Appendix 1: Shared Behaviour Expectations

Appendix 2: Strategies for Positive Reinforcement of Appropriate Behaviour

Behaviour Support Plan – Template

Student Safety Plan – Template

Related MACS policies and documents

Anti-Bullying Policy (including cyberbullying)

Attendance Policy

Complaints Handling Policy

Duty of Care Policy

Expulsion of Students Policy

Negotiated Transfer of Students Policy

Occupational Health and Safety Policy

Pastoral Care of Students Policy

Suspension of Students Policy

Resources

[CECV Positive Behaviour Guidelines 2018.](#)

[CECV Safe and Sound Practice Guidelines](#)

Victorian Registration and Qualifications Authority (VRQA) policy requirements

National Safe Schools Framework <http://www.education.gov.au/national-safe-schools-framework-0>

eXxcel: Wellbeing for Learning in Catholic School Communities

Health Promoting Schools Framework www.ahpsa.org.au

CECV Intervention Framework 2015

www.cecv.catholic.edu.au/publications/CECV-Intervention-Framework.pdf

Legislation and standards

Education and Training Reform Act 2006 (Vic.)

Education and Training Reform Regulations 2017 (Vic.)
Disability Discrimination Act 1992 (Cth)
Disability Standards for Education 2005 (Cth)
Equal Opportunity Act 2010 (Vic.)
Occupational Health and Safety Act 2004 (Vic.).

Policy information table

Responsible director	Director, Learning and Regional Services
Policy owner	General Manager, Learning Diversity
Approving authority	Executive Director
Assigned board committee	Child Safety and Risk Management
Approval date	October 2023
Risk rating	High
Date of next review	March 2025
Publication details	CEVN, school contextualised policy on school website

POLICY DATABASE INFORMATION	
Assigned framework	Care, safety and welfare of students
Supporting documents	Refer to the list of supporting documents above (appendices, procedures, forms, etc)
Superseded documents	Student Behaviour Policy – v2.0 – 2022 Student Behaviour Policy – v1.0 – 2022
New policy	

Appendix 1: Shared Behaviour Expectations

The school recognises the importance of providing clear guidance and expectations which are applicable to all members of the school community.

The table below sets out our school's expectations for its students, parents/guardians/carers and staff.

Students are expected to:	Parents/guardians/carers are expected to:	Principal/teachers and staff will:
Take responsibility for their learning and have high expectations in themselves that they can learn	Have high expectations of their child's behaviour, understand, and support the implementation of the school's behavioural expectations	Promote positive reinforcement and enhance student self-esteem by having a planned approach for recognising and responding to appropriate behaviour
Model the school's core values of respect, endeavour, communication, trust and teamwork	Openly communicate with the school regarding their child's circumstances	Deliver an inclusive and comprehensive curriculum which promotes positive behaviours and emphasises the wellbeing of every child focusing on pro-social behaviours
Take responsibility for their own behaviour and the impact of their behaviour on others	Cooperate with the school by assisting in the development and enforcement of strategies to address individual needs	Employ whole school and classroom practices to establish a climate in which appropriate behaviour is the norm for all students and focus on the implementation of preventative and early intervention strategies to deal with attendance and behavioural issues
Comply with this policy and work with teachers and parents in developing strategies to improve outcomes to: <ul style="list-style-type: none"> ● obey all reasonable requests of staff ● respect the rights of others to be safe and learn ● respect the property of others. 	Provide complete, accurate and up to date information when completing an enrolment form and supply the school, prior to and during enrolment, with any additional information as may be requested, including copies of documents such as medical/specialist reports (where relevant to the child's schooling), reports from previous schools, court orders or parenting agreements	Consistently apply this Policy through a shared collegiate understanding and only exclude students in extreme circumstances
	Comply with the school's behaviour aims and the school's Code of Conduct and to support the school in upholding prescribed standards of dress, appearance and behaviour, in accordance with the terms of your child's enrolment at the school.	Plan for the professional development needs of all staff to enable them to develop and maintain positive relationships with their students, to understand the diverse circumstances of students and provide support to those who are vulnerable or who have special needs.
	Acknowledge and understand that unacceptable behaviour by a child, or repeated behaviour by a parent or guardian that, in the school's view, is unacceptable and damaging to the partnership between parent/guardian/carer and school, may result in suspension or termination of the child's enrolment.	Recognise that for some students (including vulnerable students or students with disabilities) additional support may be needed in the form of staged responses and staff are committed to working with families to reintegrate students in an educational setting after exclusion

Appendix 2: Positive Reinforcement of Appropriate Behaviour

Lisieux Catholic Primary School will implement culturally inclusive strategies to reinforce appropriate behaviour which may include verbal recognition, individual or class rewards, communication with parents/wider school community, as appropriate.

These expectations are communicated to students and the school community in a number of ways:

- formulation and communication of school-wide positive behaviour expectations.
- school-wide supervision and effective, consistent behaviour management by all staff.
- school curriculum and pastoral initiatives which address discrimination and harassment, such as You Can Do It Program, Bully Busters, I Can Network, Alannah and Madeleine Foundation Social Skills Framework, Drug Education Programs, Seasons, RE Framework, CyberSafety Programs.
- opportunities and structures for students to report bullying and discuss concerns.
- Restorative Practice principles
- Application of the psychology of Positive Education.

Tier 1: School wide supports

Lisieux Catholic Primary School implements culturally inclusive, school-wide preventative and early intervention strategies and practices for all its students to support positive behaviours, including:

- establishing predictable, fair, and democratic classrooms and school environments
- providing physical environments that are conducive to positive behaviours and effective engagement in learning
- ensuring student participation in the development and implementation of whole school expectations
- empowering students by creating opportunities to take responsibility and be involved in decision making
- monitoring attendance and academic progress of students with the view to recognising students at risk and intervening early
- developing Personalised Learning Plans (PLP) in consultation with the Program Support Group (PSG) where appropriate for individual students.

Tier 2: Targeted supports

In addition to Tier 1 supports, some students may require targeted support or interventions to meet behavioural standards, including regular attendance. These students will be supported through a culturally appropriate staged response, including:

- understanding the student's background and needs
- ensuring a clear understanding of expectations by both students and teachers
- provision of consistent school and classroom environments
- scaffolding the student's learning program
- data collection and documentation of incidents relating to the management of student behaviours to inform decision making
- revision of the Personalised Learning Plan (PLP) and creation of a Behaviour Support Plan (BSP), Student Safety Plan (SSP) or Attendance Maximisation Plan (AMP) as appropriate
- parent consultation via phone, videoconference, or interview
- the design and implementation of support strategies that assist the student to self-calm such as a quiet space or designated alternative area that they can go to if they are feeling overwhelmed
- case conference with relevant medical or specialist providers or MACS consultants (this may include Aboriginal and Torres Strait Islander or EAL/New Arrival/Refugee Learning Consultants where culturally appropriate).

Tier 3: Intensive intervention

When Tier 1 and Tier 2 systems are in place, the foundation for implementing Tier 3 supports is established. Complex behaviours are targeted to remediate and prevent further escalations. Support provided to students at Lisieux Catholic Primary School will be aligned directly with the goals and targets set out in the students' Personalised Learning Plan (PLP), Behaviour Support Plan (BSP) and Student Safety Plan (SSP). Data systems provide school personnel with accurate, timely and practical information for making decisions about the fidelity and impact of individualised interventions that:

- value the student and support positive interaction
- have a clear data-informed strategy focused on preventing the occurrence of an identified behaviour by avoiding or adapting the circumstances that usually trigger this behaviour
- focus on building skills and developing alternative behaviours
- consider the motivation for or functions of behaviours
- use the student's strengths and interests to promote success.

Lisieux Catholic Primary School will implement more intensive intervention strategies for students presenting with complex and ongoing difficulties or extended school refusal. Development of plans will require support from parents/carers and will often require consent to access specialised services.

Lisieux Catholic Primary School will support students with complex behaviours of concern through a culturally appropriate staged response which will generally include:

- ongoing implementation of universal and Tier 2 strategies
- use of data to inform and monitor the implementation of evidence-based interventions
- regular Program Support Group meetings to review PLP, BSP, safety plans and/or Attendance Maximisation Plans
- consultations with mutually agreed specialised support services
- implementation of explicit, data informed strategies designed to support the student to display safe behaviours. The design of the individualised support will be informed by the identified function of the behaviour and the explicit teaching of skills and desired behaviours.

Consequences for student misbehaviour

Lisieux Catholic Primary School adopts a staged response to challenging behaviour and appropriate reinforcement of appropriate behaviour noting that an effective Behaviour Support Plan (BSP) is developed to support the student in learning skills required for positive social interaction, along with the ability to become a more effective and successful learner. Consequences for misbehaviour are also implemented which may take the form of:

- non-verbal warning – e.g. eye contact/hand movement/shake of head/teacher positioning to stand near misbehaving student/s
- verbal warning which identifies the misbehaviour and gives student the opportunity to change his/her behaviour
- moving student in the room to a less disrupting situation
- separating student from the class for a short period of time to provide an opportunity for the student to settle
- readmission to class activity based on student being de-escalated
- student required to stay in after class for set period of time
- student required to complete work during recess/lunchtime
- student engaged in restorative actions supervised by classroom teacher
- student re-entry meeting.

When concerns arise about a student's on-going behaviour or when a student is displaying chronic patterns of problem behaviour, Lisieux Catholic Primary School will implement a targeted response to identify and address the presenting issues and reinforce replacement behaviours. This may involve the following support strategies:

- convening a Program Support Group (PSG) meeting involving parents/guardians/carers, Learning Diversity/Wellbeing coordinator and the student where appropriate
- Developing/revising a Personalised Learning Plan (PLP) or attendance plan
- development/revision of a Behaviour Support Plan (BSP) and/or Safety Plan where appropriate for individual students
- referral to MACS or external health or allied health providers
- consultation with external professionals, paediatrician, psychologist specialist practitioner
- contact with the regional office.